

A clean, elegant, and sophisticated white mock-up in 1080x1080 resolution, with a minimalist and editorial design. The background is pure white with subtle shadows and soft lighting, evoking a sense of luxury and high-end fashion. At the center, in bold, refined typography, the title 'IN HONOR COLLECTION' should be displayed, making it the focal point. The mock-up should exude an editorial aesthetic with a high-definition, 4K quality, and maximum detail, suitable for showcasing a sophisticated fashion collection. No clothing items or distractions, just pure elegance and clean lines.



A monumental, gleaming full moon, with every crater and texture meticulously rendered, hangs low in a serene night sky, its silvery light dancing across undulating waves that stretch towards the horizon, each ripple and cresting wavelet captured in exquisite, hyper-realistic detail, as if gazing upon a photograph, in an Ultra HD 128k resolution that invites the viewer to step into the tranquil, dreamlike atmosphere, with the moon's subtle, creamy glow illuminating the dark blue, almost black water, creating an otherworldly sense of depth and dimensionality.



A golden logo with elegant, cursive script featuring the text "Boss Coiffeur" in a bold, modern font, surrounded by a pair of scissors and a comb, both intricately designed with fine details, placed diagonally to create a sense of movement, with the scissors lying across the top of the comb, against a clean, creamy white background that subtly gradienting to a light beige towards the edges, evoking a sense of sophistication and professionalism, with the entire design emitting a warm, luxurious glow, as if made from genuine gold, and the text and icons are embossed, giving a sense of depth and dimensionality.



Beef delicious Shawarma with crispy fries, and garlic sauce on the side, delicious



a dramatic high contrast full body illustration of a fierce but exceptionally beautiful viking princess with perfect anatomy wielding a sinister glowing viking sword in a fighting stance. Blond hair. Striking blue eyes. perfect anatomy. moody background of the scandinavian sea with a fleet of viking ships on the tempestuous waves. faint northern lights overhead



This image showcases a modern, minimalist living room with a clean and elegant design. The layout features a large, white sectional sofa adorned with matching white cushions, positioned against a plain white wall. Natural light streams from the left, casting soft shadows and enhancing the serene ambiance. In front of the sofa, there is a round, light wood coffee table with a simple white vase holding a few bare branches, adding a touch of nature to the space. The floor is covered with a light-colored rug, complementing the overall monochromatic color scheme. The room exudes a sense of calm and sophistication, with its uncluttered and harmonious aesthetic.



"Visualize a hyper-realistic mockup of a corporate identity design template, A light colors like pink and light tan color palette, with quadrille texture. Classic stationery template design. Hoodie, t shirt, hat,, t-shirt, cap,, sweater, travel bag,business card, isolated on a smooth white background." For a brand LIONEL ARI clothing.co since 2013



A cinematic, high-contrast, minimalist photograph featuring a black gift box with intricately crafted gold ribbon and bow, also ribbon is black with gold lines on the sides, suspended in mid-air at a dramatic angle against a solid, velvety black background, evoking a sense of dynamic motion and tension. The gold ribbon and bow, add a touch of opulence and sophistication to the overall composition. dark surface creates a sense of visual depth and adds an air of mystery, there is accent purple light. The focused lighting highlights the smooth, matte texture. The overall atmosphere is one of luxury, sophistication, and intrigue, inviting the viewer to ponder the outcome of the roll. Make it more dramatic and add more sharp lines and angles. The color of gold should be #F9AF2C, #FFC756, #F18818. Purple should be color of #9C39FF. there should be thin gold metal plates on the side corners of the box. Make all more matte



Masterpiece. Beautiful, bold, and provocative photo-realistic render of a packet of cigarettes slowly turning into smoke, fading away into thin air. The smoke subtly forms euro signs, blending into the sky. Photorealistic, moody lighting, somewhere on a beach near Vannes in south Brittany.



A sleek and minimalist women's signet ring, designed for the modern and sophisticated woman. Crafted solely from metal with no gemstones, this ring exudes elegance and simplicity. The smooth, clean lines of the design are perfect for the contemporary fashionista. Picture a stunning close-up photograph capturing the fine details of this refined accessory, showcasing its impeccable craftsmanship and timeless beauty. This high-quality image will leave viewers in awe of the understated yet luxurious appeal of the ring.



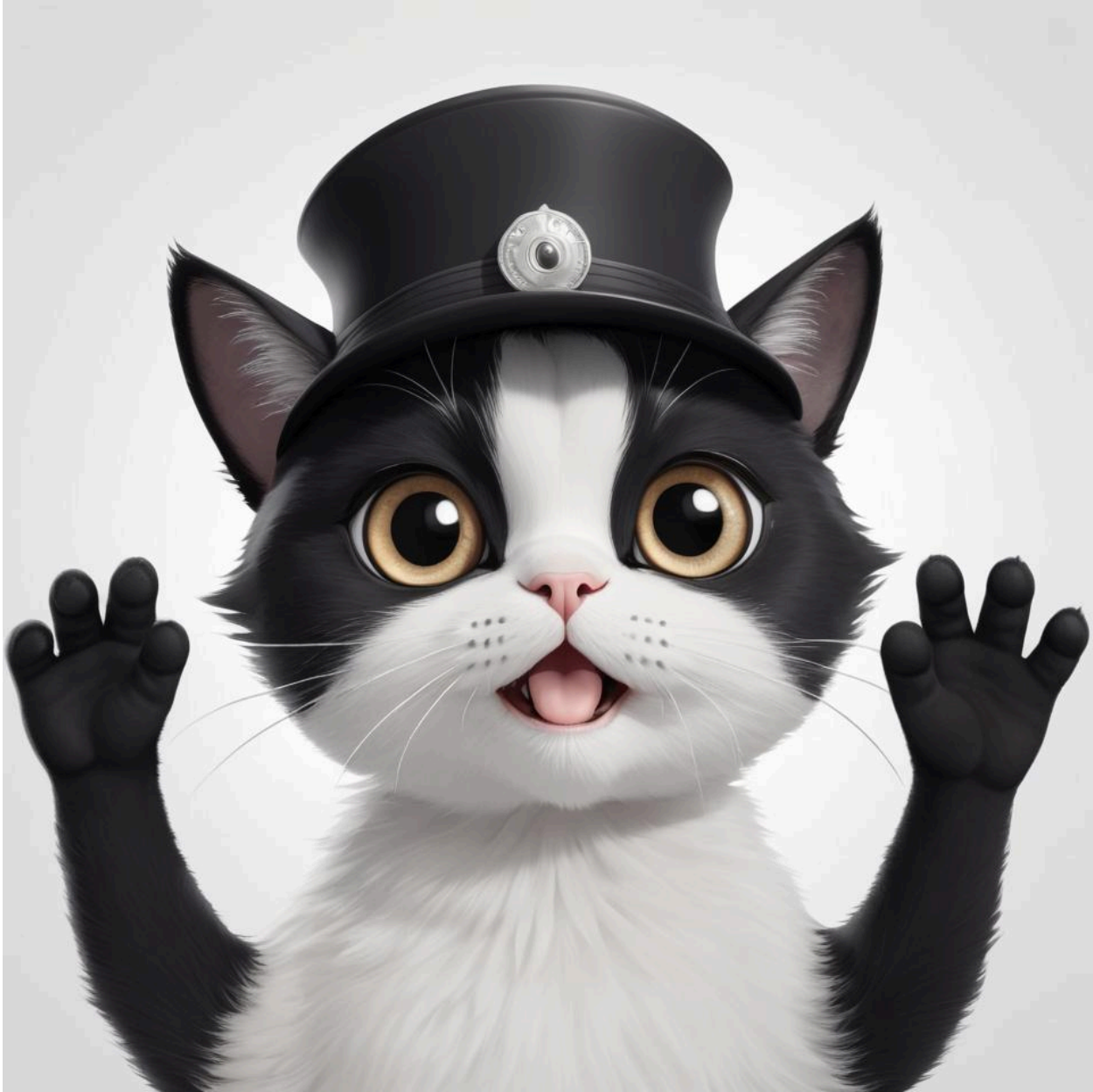
A towering figure emerges from the shadows in an ultraviolet silhouette, embodying the stoic strength of a Susano samurai giant. The logo depicts the samurai standing proudly, clad in intricate armor and wielding a massive sword. This striking image, possibly a digital painting, boasts flawless details: every line and curve is meticulously rendered, showcasing the grandeur and power of the samurai. The colors pop with vibrancy, making the figure seem almost lifelike in its presence. This high-quality image is sure to captivate viewers with its artistry and skillful execution. Amidst this vivid tableau, Shadow Panther stands sentinel, his presence a blend of ancient legend and futuristic technology, cloaked in mystery and the aura of night. His eyes, a glowing red against the dark, survey his domain with vigilant precision, his vibranium-infused claws ready to strike against threats veiled in the urban decay. Each element of his persona—the spectral agility, the advanced tech woven into his fabric, the ancient wisdom encoded in his gear—converges to craft a figure both awe-inspiring and enigmatic, a protector forged from the past yet perfectly poised for the future.



Generate a highly detailed, monochromatic portrait of an elderly man. His weathered face, adorned with a full white beard, exudes wisdom and melancholy. The lighting captures every crease and line on his skin, emphasizing the passage of time and the emotional weight he carries. The image conveys a deep sense of reflection and the beauty found in aging.



black and white cat face avatar with big eyes, hand waving, wearing hat with white background



Create a realistic video recording scenario with bright, colorful lighting and a football theme. In the background, a large screen with a white background. Realistic images with green and white colors.



simple flat vector illustration vibrant colors, line art, simple lines, colorful design, beautiful glass of mulled wine with anise, cinnamon, orange



A group of tall, blonde, middle-aged woman in battle dress with knee-high boots poses proudly on the balcony of an 1700s wooden house built from half of a sailing ship and some masts, rudders and other pieces of ship filled with flowering plants and built in a narrow and lush tropical bay



“Create a vibrant African traveler character that represents Tukki Katt, a travel agency specializing in African and Caribbean destinations. The character should have dark skin and short curly hair, wearing a stylish outfit combining modern and traditional African elements. The outfit should include a t-shirt, jacket, or shirt with the Tukki Katt logo clearly displayed on the front. The character is carrying a suitcase, symbolizing adventure and exploration, and is confidently standing with a warm, welcoming smile. The colors should reflect a travel-inspired palette, with earthy tones like beige, ochre, and terracotta. The background should be minimal, focusing on the character, with subtle travel-related elements like a globe or passport. Ensure the character evokes curiosity, adventure, and cultural pride, embodying the spirit of exploration that Tukki Katt promotes.”



Image is a digitally edited photograph featuring three women standing and interacting taken for social media . They are dressed in a professional uniform , each wearing a white dress shirt, a maroon with small yellow polka dots patterned tie, and black skirts or pants and a gold name badge attached to their shirts . The woman on the left has long brown hair, fair skin, and is gesturing with her right hand. The woman in the middle has long light brown hair, fair skin, and is holding a purple handbag in her left hand. The woman on the right has short brown hair, fair skin, and is smiling widely with her mouth open. The background is in front of the reception of Alexander Hotel School.



A man puts on a VR headset and everything around him melts into blackness. Ominous tone. Everything in the background starts glitching. The world around him starts to melt away into digital clay. Strange dream. Creepy. Everything begins to dissolve into digital ether. Haunting. Make sure to show everything around him dissolving.



A highly detailed, realistic botanical study showcasing an exquisite arrangement of flowers, depicted with precise botanical accuracy, highlighting the intricate textures and subtle color variations that dance across each petal, with a soft pastel color palette that exudes vibrancy and subtle contrast, featuring delicate, velvety-soft rose petals in gentle blush tones, alongside dainty, star-shaped flowers with creamy white centers and pale yellow tips, surrounded by luscious, emerald green foliage with delicate, curly stems, set against a creamy, ivory-white background that subtly gradates to a pale, mossy green towards the edges, with meticulous attention to the subtle play of light and shadow.



Pug dog in halloween disguise sitting and wearing witch hat with pumpkins on his sides



A realistic highway exit sign with a sleek, modern design, set against a bright blue sky with a few wispy white clouds, featuring two prominent arrows, one pointing towards the right, indicating direction to WINNERS WAY in bold, white, sans-serif font, and the other pointing towards the left, indicating direction to LOSERS LANE in the same font, both arrows filled with a subtle gradient effect, the sign's surface slightly weathered with a few scratches and fading, mounted on a sturdy, silver pole with a subtle rust tone, the entire structure casting a slight shadow on the asphalt below, with a blurred, out-of-focus highway landscape in the background, evoking a sense of dynamic movement and international connection. WITH THE TITTLE "BATTLE BUDDY USA" in heavy bold print



“Design an edgy oversized black puffer jacket featuring a bold snake print that coils across the entire surface. The snake’s scales are intricately detailed in metallic silver and emerald green, creating a striking contrast against the black background. The oversized fit includes dropped shoulders, wide sleeves, and a high padded collar for a modern, streetwear vibe. The snake wraps around the jacket’s body and sleeves, blending seamlessly with the quilted texture. The minimalist background, combined with soft lighting, enhances the glossy finish of the scales, giving the jacket a dangerous yet luxurious feel.”



A stunning Slovak actress with voluminous, Luscious, rich dark hair slickly pulled back into a bun, a very deep tan and exquisite facial features with very slanted almond shaped green eyes wearing winged eyeliner, mascara, blush and bronzer and light lipstick sips coffee on a terrace surrounded by flowers wearing a blouse and jeans



In this mesmerizing image, we see a skull seemingly formed out of swirling smoke, a representation that conjures images of the ethereal boundary between life and death. The delicate wisps of smoke curl around the skull, creating an eerie yet strangely beautiful piece of art that resonates with themes of mortality, mystery, and the intangible. It's as if the essence of a spirit is captured within the transient dance of the smoke, hinting at tales of the supernatural and the unknown, and we see the inscription 'KIV KVBIR ORIGINVL' in smoke.



Create an image with a large, wild nature with a sunrise. It looks like an advertisement for an outdoor company. Lakes, hares, a stately stag, a forest and flowers can be seen in the background. Super wide angle shot, Dji drone



Create an image with a large, wild nature with a sunrise. It looks like an advertisement for an outdoor company. Lakes, hares, a stately stag, a forest and flowers can be seen in the background. Super wide angle shot, Dji drone



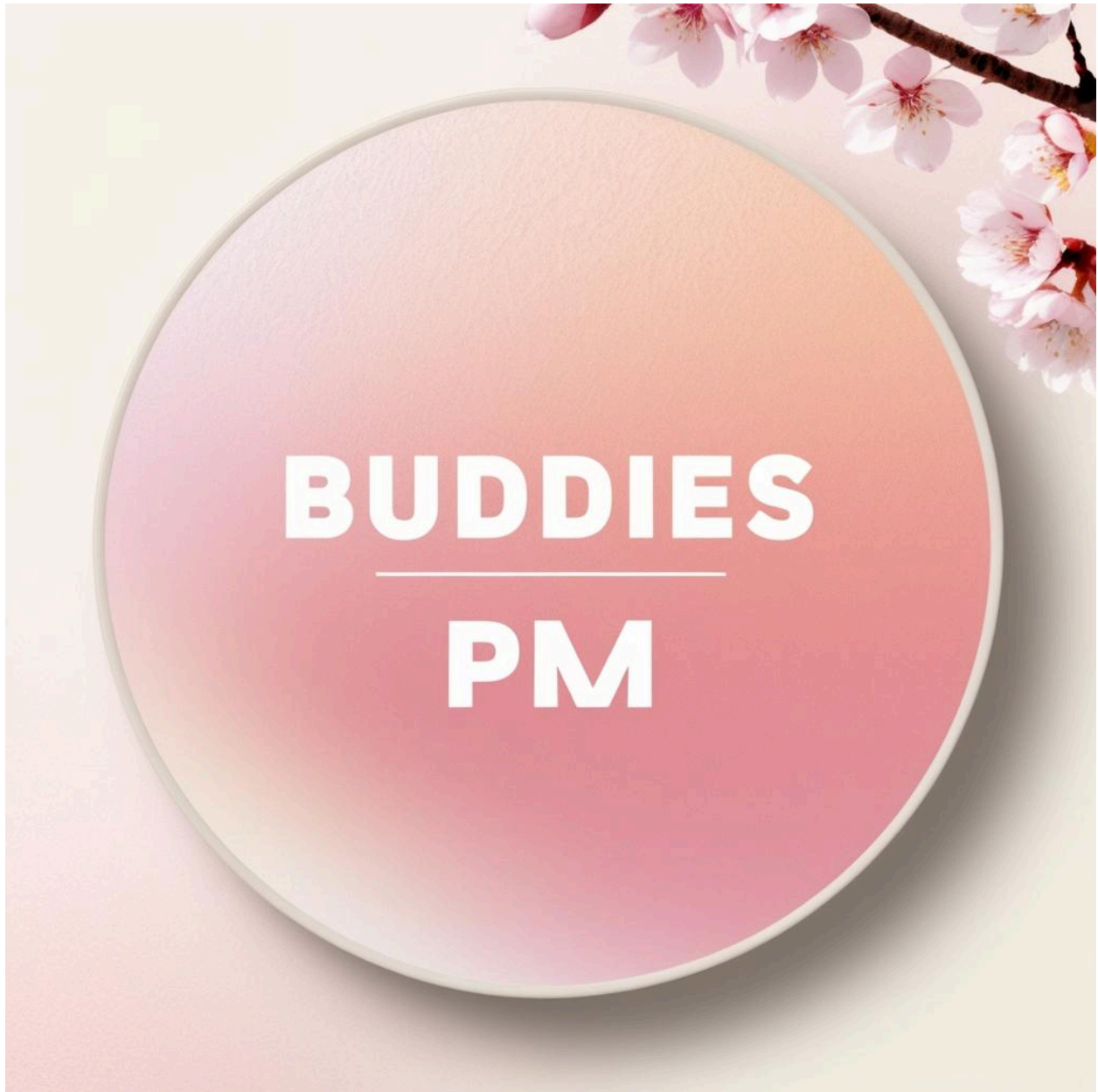
a small, adorable domestic cat with fluffy fur, large round eyes, and a tiny pink nose, sitting upright on a soft, white background, with subtle natural lighting illuminating its gentle features, its fur a mix of creamy whites and warm grays, with a delicate sprinkle of freckles on its nose and a subtle sparkle in its eyes, its whiskers long and slender, its ears perked up and slightly tilted, as if listening to a faint sound, its paws tucked in and curled up, giving a sense of vulnerability and cuteness.



"A stylish logo of 'M. Aneeq Ahmad' displayed on a sleek glass wall in a modern commercial office. The space is illuminated with a combination of blue and orange hues, creating a dynamic and professional environment. The logo appears sharp and contemporary, elegantly blending with the reflective glass surface. The glass wall is large and minimal, allowing the logo to be the focal point, with the office background subtly enhancing the vibrant blue and orange color scheme."



A vibrant and charming icon with a clean, modern design, featuring bold, sans-serif text "Buddies PM" in a crisp white font with subtle gradient effects, centered prominently on a soft, gradient background that transitions from a delicate cherry blossom pink at the top to a creamy white at the bottom, evoking a sense of warmth and approachability, with a subtle texture resembling the gentle petals of a cherry blossom, and a subtle rounded border to give the icon a friendly, inviting feel, with a slight drop shadow to add depth and dimension.



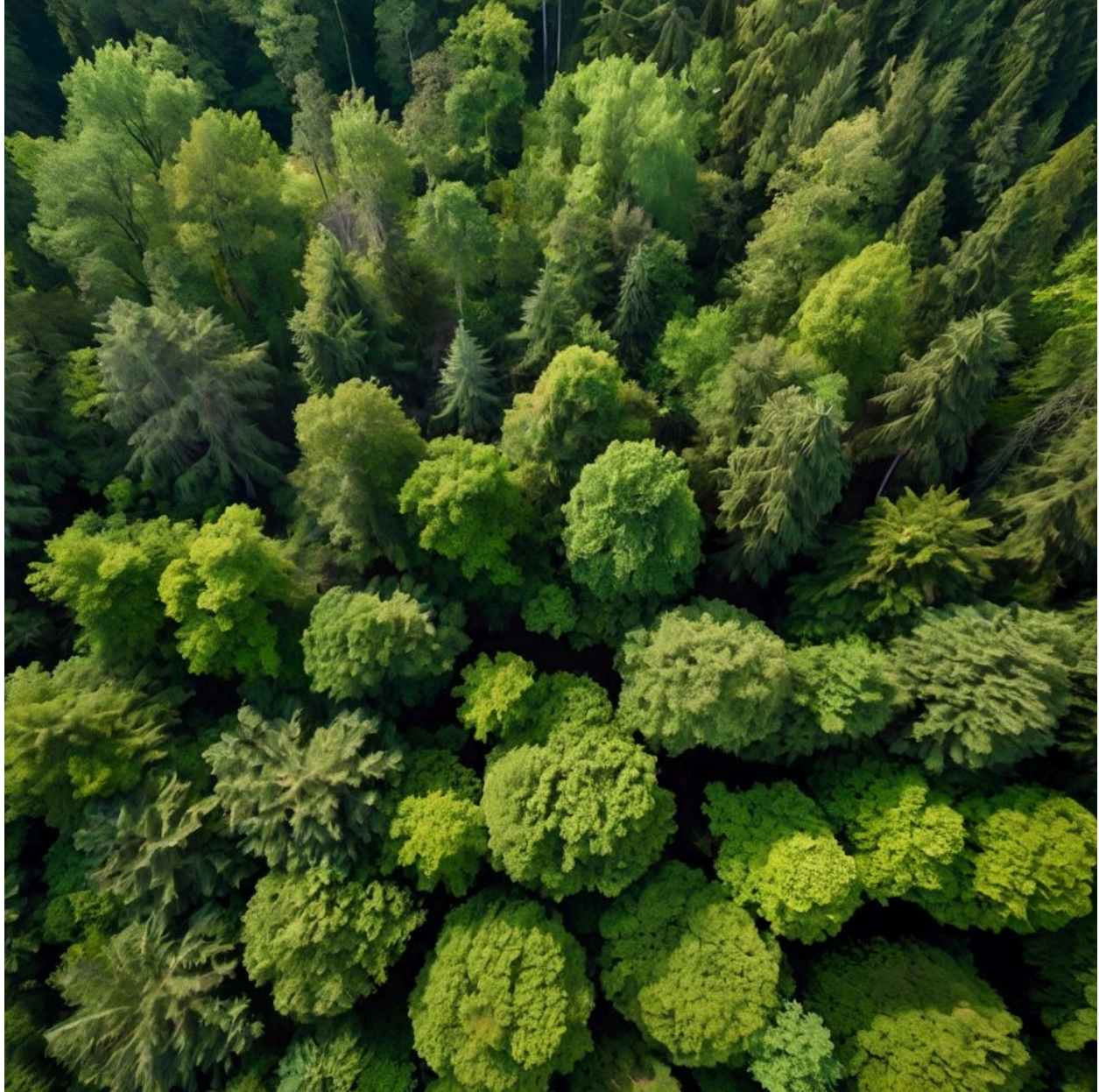
A proud and fierce ancient barbarian native Aphrodite sleeping in a highly detailed old oil painting, heavily inspired by a mix of Alain Alsan, Rembrandt and William Bouguereau. She is in her forties, flimsy outfit, very lightly dressed in leather and adorned with ethnic bronze jewelry. Her deep, almond-shaped eyes complement her very very short, bob-cut auburn hair. hairstyle in the wind. Ethnic tattoos decorate her slightly tanned, bronzed skin, and her facial features have Asian characteristics with high cheekbones. Her overall appearance is athletic, reminiscent of an Amazon. The background features a “post-apocalyptic” landscape. No feathers are present in her hair. The image, presented in a full body view has a vintage character with an overall appearance inspired by a 17th-century painting.



The image depicts an imaginative ancient city of Atlantis at night, bathed in a soft, ethereal glow emanating from towering crystalline pillars that surround a robust, beefy Atlantian man standing proudly in the center. He wears skin-tight, vibrant golden briefs that accentuate his physique, and his body is adorned with intricate, swirling blue tattoos that shimmer and glow with an otherworldly light. His skin has a warm, golden undertone, and his facial features are strong and defined, with a prominent jawline. Minimalistic golden attire. The city's architecture is a blend of ancient Greek and futuristic styles with houses glowing with organic lights. In the background, the night sky is a deep shade of indigo, with a few scattered stars twinkling like diamonds.



Aerial view of a dense green forest. The forest is filled with lush, vibrant trees, densely packed together to form a continuous canopy. The different shades of green create a natural and untouched look, extending as far as the eye can see. No water bodies or rivers are visible, just the endless greenery of the forest stretching across the landscape, with subtle hills and valleys forming the terrain beneath the trees.



A vibrant, whimsical mind map depicting the concept of hope, set against a soft, creamy background that evokes a sense of optimism, with delicate, hand-drawn lines and swirling patterns in shades of sunshine yellow, sky blue, and pale green, resembling a blooming flower. The word "hope" is placed at the center, written in bold, cursive script with varying font sizes, surrounded by radiating branches that represent different aspects of hope, such as a lightbulb for inspiration, a pair of wings for freedom, and a heart for love. Each branch is adorned with tiny icons, like a dove for peace, a sparkling star for magic, and a blooming seedling for growth, all interconnected to convey the idea that hope is a collective, ever-expanding force. The overall design is organic, playful, and dreamy, with subtle texture and gentle shading to give it a sense of depth and dimensionality.



Fases lunares



A dramatic, high-contrast, black and white photograph of a woman standing alone in a dimly lit, musty basement, her eyes shielded by her palms, with an air of mystery and vulnerability, her face illuminated only by a faint, eerie glow seeping through the cracks of the old concrete walls, her skin tone a soft, porcelain-like complexion, her dark hair disheveled and framing her pale face, her lips pressed together in a worried expression, her shoulders slightly hunched, as if weighed down by the secrets and fears that lurk in the shadows, the surrounding environment dense with foreboding, the walls cracked, the floor littered with cobwebs, old pipes and rusty machinery scattered about, with an overall mood of ominous silence and palpable tension.



A strikingly modern shelving unit displays a collection of potions customized for each zodiac sign. Each bottle is adorned with intricate, reflective designs that symbolize the unique traits of the corresponding astrological sign. This vibrant painting captures the precision and artistry of the potions, with bold lines and a minimal style that enhances their significance. The coloring book style of the image enhances the whimsical and imaginative nature of the subject matter, creating a visually stunning and captivating scene.



A serene sunset over a calm sea symbolizes the peace that comes after a storm, with the sun representing God's comforting presence



Close up photography of robot hands washing and cleaning a wooden surface with soap and foam, make it clear



A dramatic and bold heavy metal music CD cover, featuring a hauntingly dark background with subtle hints of fiery orange and red, evoking a sense of intensity and rebellion. The title "Hard Times and Heavy Riffs" is emblazoned in bold, graffiti-style lettering, with chunky, distressed metal-inspired font, in a mesmerizing silver-gray hue that seems to jump off the cover. The band name "FizzleX" is written in smaller, yet equally striking, gothic-inspired script above the title, in a deep, blood-red color. A stylized, abstract illustration of a snake coiled around a Marshall amp, with electric guitar strings entwined around its body, takes center stage, with the snake's eyes glowing bright red like embers. The layout is asymmetrical, with the title and band name placed at an angle, as if ripped from a city street wall, adding to the edgy, in-your-face aesthetic.



A exquisite, intricately designed piece of jade jewelry, set against a rich, dark green velvet backdrop, with subtle, warm golden lighting highlighting the subtle, gradient-like variations in the jade's color, ranging from pale mint to deep forest. The jewelry features a statement piece, such as a pendant or brooch, showcasing an ornate, organic design inspired by traditional Chinese motifs, like the dragon or phoenix, with delicate, ornate filigree and subtle, raised patterns. The jade is polished to a high shine, accentuating its natural, luminous quality. In the background, a subtle, gradient-like blur of lighter greens and golds adds depth and context to the image, while the overall framing is tight, focusing the viewer's attention on the intricate details of the jewelry. The overall aesthetic is one of understated, sophisticated luxury and elegance.



A vibrant and festive photography piece, "Design For HAPPY NEW YEAR", showcasing a shallow depth of field with a deliberate bokeh effect, capturing the excitement and joy of the holiday season. The background is a warm, creamy white, with blurred, twinkling lights in shades of gold, silver, and red, creating a sense of movement and energy. In the foreground, bold, metallic gold lettering spells out "HAPPY NEW YEAR" in a flowing, cursive script, with the words "Design For" written in a simpler, yet elegant, sans-serif font above the main text. The entire design is framed by a delicate, snowflake-patterned border, adding a touch of whimsy and winter wonder. The overall aesthetic is luxurious, modern, and celebratory, with a focus on capturing the magic and glamour of the holiday season.



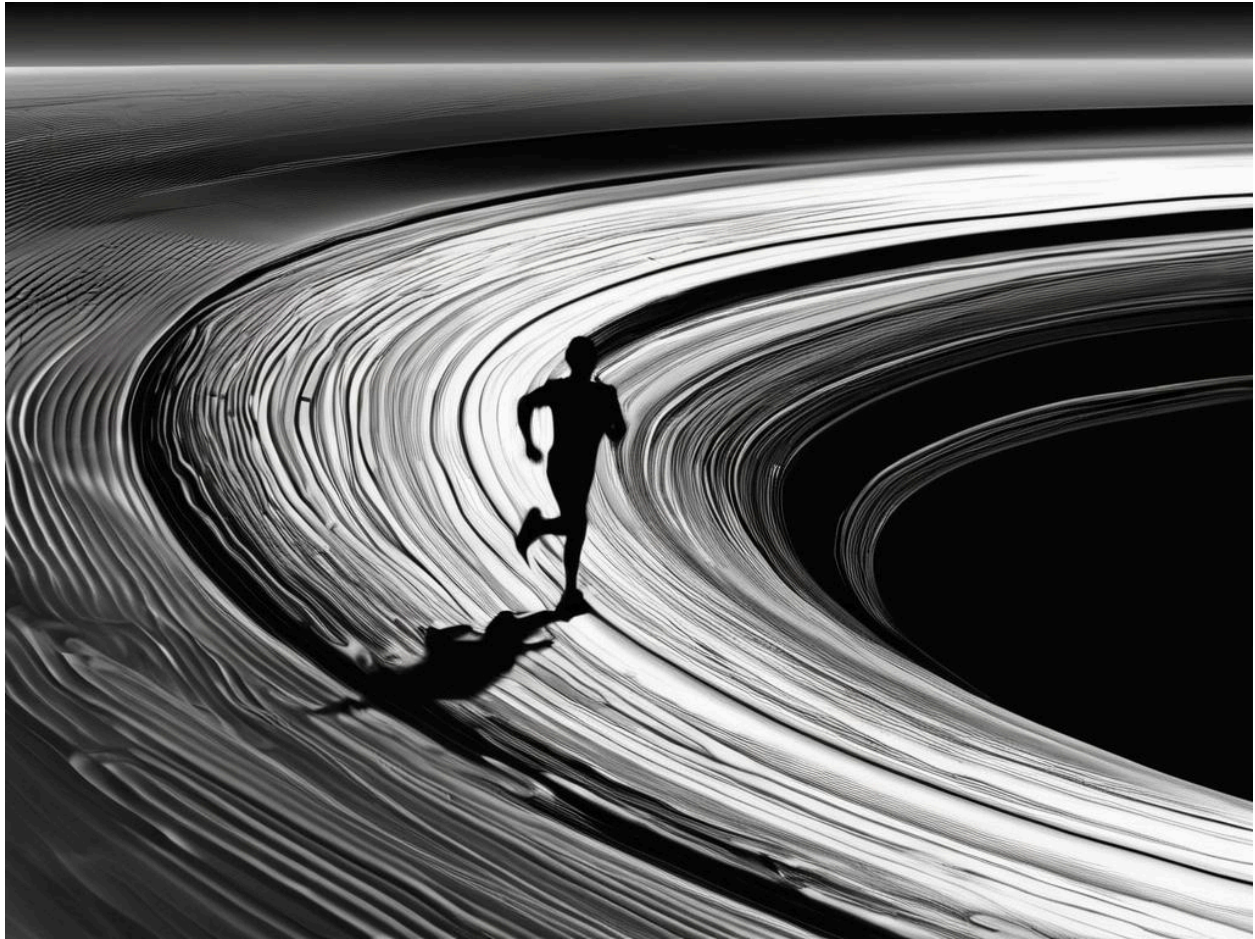
A portrait of amigo the devil



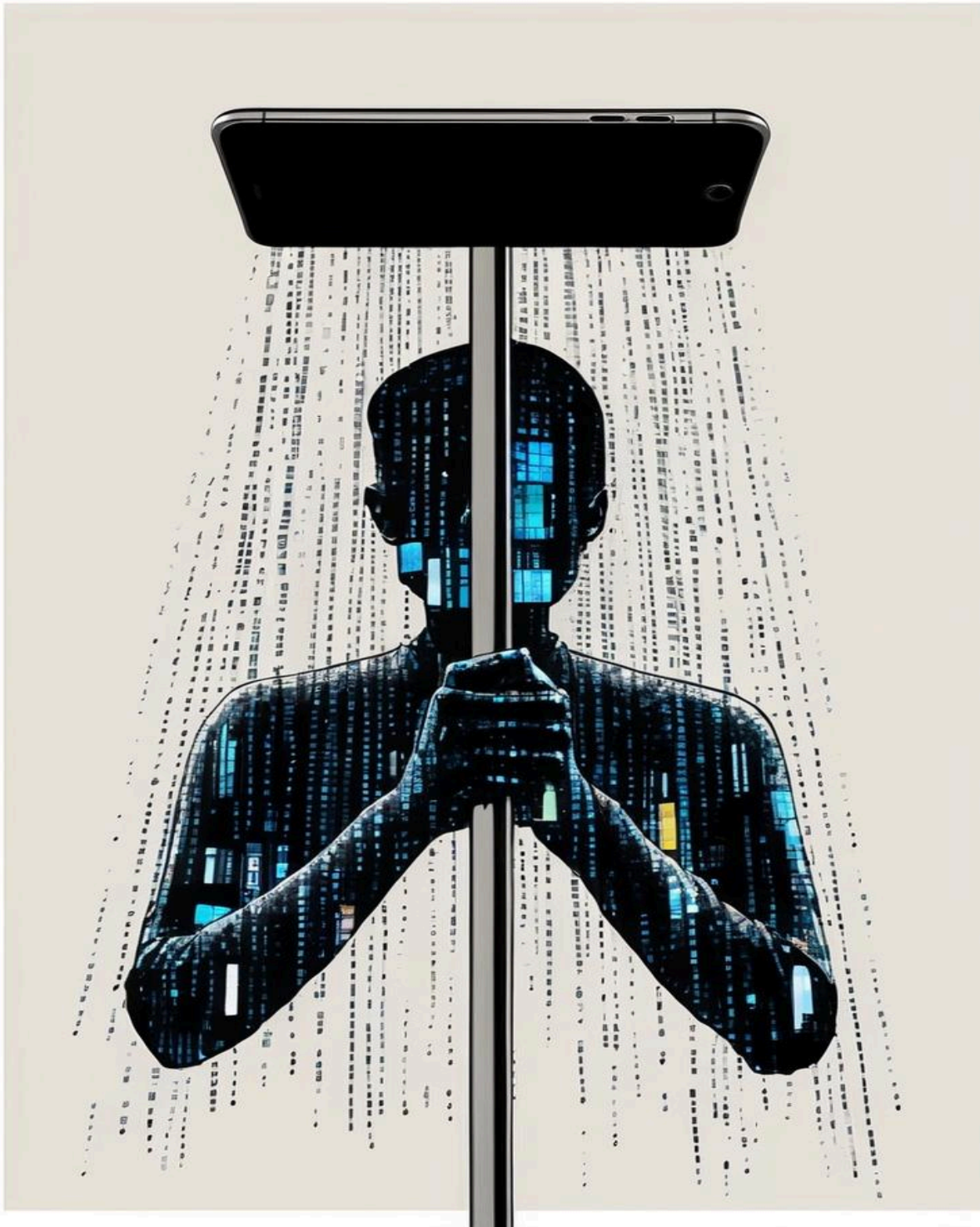
a breathtakingly detailed, ultra-high-resolution illustration of a classic cinema, set against a warm, golden background, with ornate, Art Deco-inspired architectural elements, lush, crimson-red curtains, and a grand, sweeping staircase, adorned with intricate, golden filigree, and populated by elegantly dressed patrons, with diverse skin tones and hairstyles, including a few aficionados intensely focused on the silver screen, their faces illuminated by the soft, cinematic glow, while others mingle, socialize, or simply bask in the nostalgic atmosphere, with subtle, gradient-like shadows and textures that evoke a sense of depth, dimension, and rich, cinematic history, all rendered in vibrant, yet muted colors, with bold, expressive lines and delicate, painterly brushstrokes that evoke a sense of luxury, sophistication, and timeless, Old Hollywood glamour.



a man running in the rings of saturn, man is a shadow or black not visible and the cam is very far from it.



In a maximalist style, illustrate a silhouetted person holding a huge flat smartphone on a pole flat over their head. There are sheets of tv static raining down from the phone over the person, completely obscuring the persons upper body and face with static raining digital glitches.

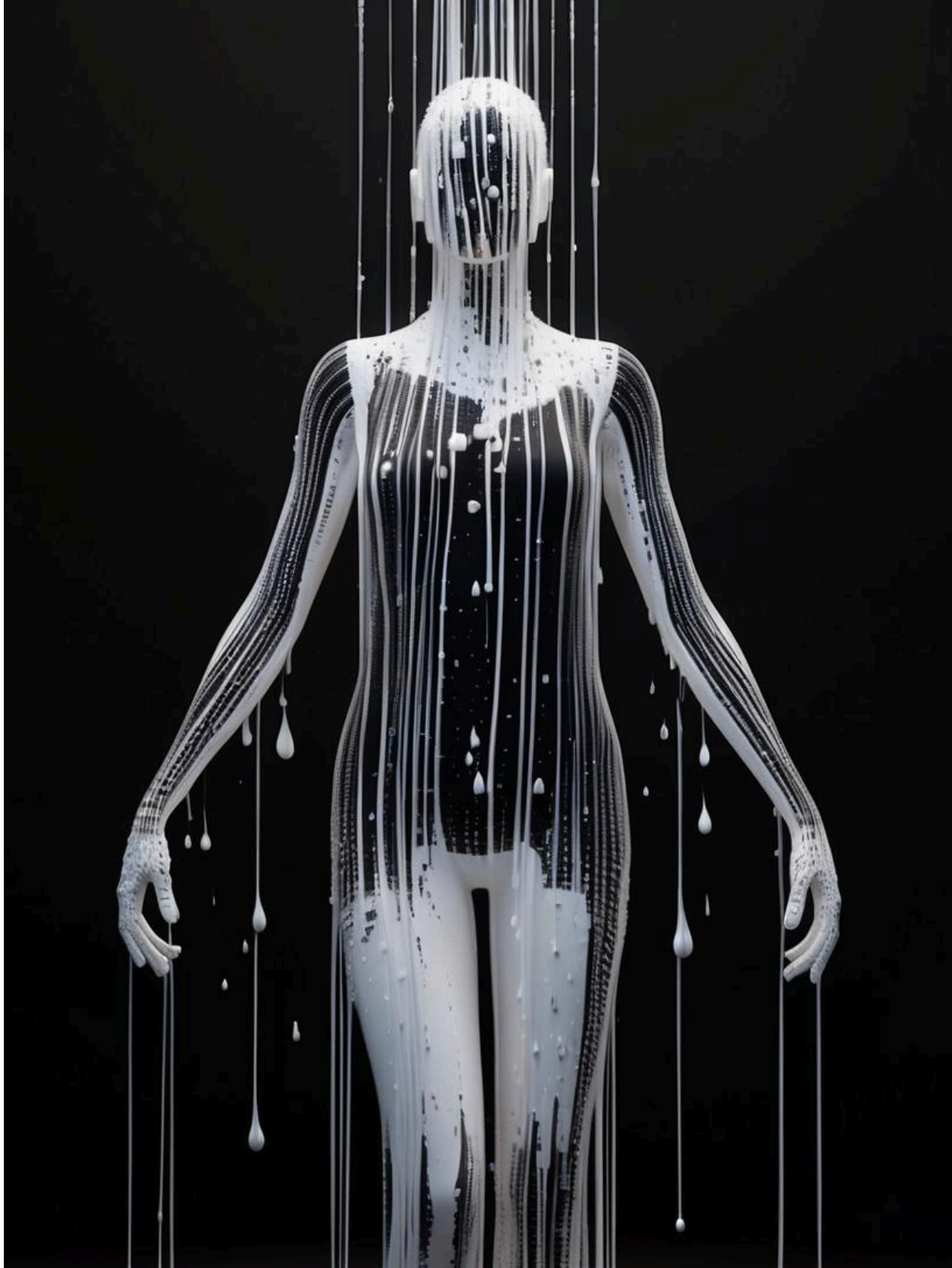


High-quality, sharp, and well-lit professional photograph depicting a serene and organized wellness setting, conveying the importance of supplements for overall health, with a subtle natural background, perhaps a blurred-out fitness studio or a minimalist desk with a few strategically placed nutritional books, featuring a warm and inviting color scheme comprising calming shades of light blue, beige, and earthy tones, with a slight emphasis on green to represent growth and nature, showcasing a tastefully arranged still life composition of various supplements, including vitamin capsules, protein powders, and omega-3 fish oil bottles, displayed on a clean and modern wooden or glass surface, surrounded by a few carefully placed fresh fruits or vegetables, such as lemons, apples, or leafy greens, with elegant typography integrating the text "Why Supplements Are Essential for Your Health" in a clear, easy-to-read font, possibly in a subtle curve or circular formation, effectively communicating the importance of supplements in maintaining a healthy lifestyle.

Why Supplements are essential for your health



A ((invisible woman body)), set against a solid black background. Her form is (partially revealed) only through fine droplets of white paint running down her body in intricate patterns. The paint cascades delicately over her curves, without ever fully defining her shape, leaving parts of her figure obscured and undefined. This creates an ethereal, almost abstract effect, where (the woman's form is only suggested rather than fully shown). The focus is on the delicate interaction of the paint with the invisible figure, creating an impression of fluidity and movement. The black background intensifies this contrast, emphasizing the ephemeral nature of the paint trails.



A cinematic photograph showcasing a serene moment in nature, with a warm golden light cast upon the scene, capturing the intricate textures and patterns of the surroundings, such as the roughness of tree bark, the softness of leaves, and the gentle ripples on a tranquil lake or river, evoking a sense of calm and wonder, with a shallow depth of field, drawing attention to the main subject, perhaps a majestic stag or a delicate butterfly, with its wings spread wide, set against a blurred yet vibrant background of lush greenery, with an atmospheric mist hovering above, adding a touch of mystery to the composition, shot in a horizontal format to emphasize the expansive beauty of the natural world, with the subject placed slightly off-center, creating a sense of movement and energy.



A highly detailed, cinematic close-up photograph of a solitary, exquisite, and realistic strawberry ice sorbet ball, glistening with subtle condensation droplets, delicately placed in a simple, minimalistic, and clean pure white ceramic cylindrical cup with a slight sheen, on a clean, soft gray-beige background, capturing the intricate nuances of texture, light, and shadow, with a shallow depth of field, blurring the cup's edges and emphasizing the vibrant, pastel pink hue of the sorbet, evoking a sense of freshness, serenity, and summery allure, in a natural, soft, diffused lighting with a subtle gradient of frozen tones, and precise, cinematic composition, framing the sorbet as the main subject, inviting the viewer to indulge in its sweet appeal, shot in a medium to close-up range, with a focus on the sorbet's slightly irregular, handmade appearance, featuring minute imperfections and ridges, and the delicate, gentle curvature of the cup's rim, with a subtle play of light on the cup's surface, accentuating the overall sense of elegance and refinement.



A ((invisible woman body)), set against a solid black background. Her form is (partially revealed) only through fine droplets of white paint running down her body in intricate patterns. The paint cascades delicately over her curves, without ever fully defining her shape, leaving parts of her figure obscured and undefined. This creates an ethereal, almost abstract effect, where (the woman's form is only suggested rather than fully shown). The focus is on the delicate interaction of the paint with the invisible figure, creating an impression of fluidity and movement. The black background intensifies this contrast, emphasizing the ephemeral nature of the paint trails.

